

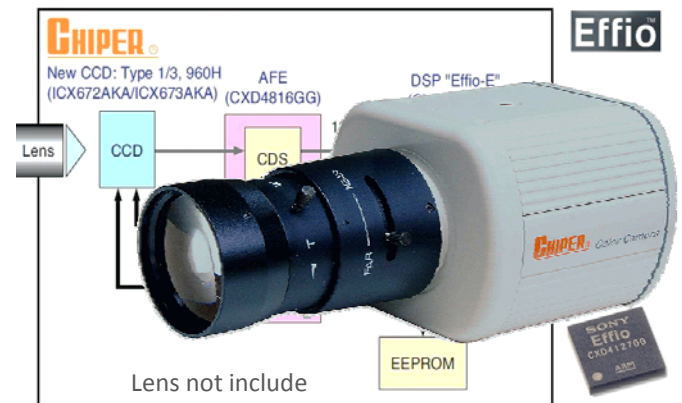
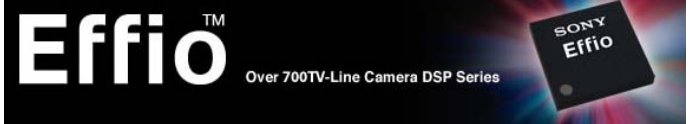
1/3" Effio Exview HAD II SONY 960H CCD
Star Light, Day and Night ICR Camera

CPT-CD40

High resolution 700 TV lines
Day-Night ICR filter , true color and fine focus image

SPECIFICATION

camera	model : CPT-CD40
Image sensor	Sony Effio 1/3" Exview HAD II COLOR CCD
Scanning system	2:1 interlace
Scanning frequency	NTSC: Hor 15,734Hz x Ver 59.94Hz, 60Hz Line lock PAL: Hor 15,625Hz x Ver 50Hz, 50Hz Line lock
Picture elements	NTSC: 976(H) x 494(V), 480K, 525 lines 60Hz PAL: 976(H) x 582(V), 570K, 625 lines 50Hz
Synchronization	Internal mode
Resolution	by coded read out, BW-700TVL, Color-650TVL
Sensitivity	BW-0.01 Lux at F1.2, Color-0.5Lux at F1.2, AGC on
S/N Ratio	≥ 66dB (AGC off, AESC off, Y sig.)
video out	1.0Vp-p, 75Ω, BNC, Y/C mode optional
E.auto shutter	Auto Electronic Shutter : 1/50(60) ~ 1/100,000
Manual shutter	8 speed selection : 1/50(60), 1/100, 1/250, 1/500, 1/1000, 1/2000, 1/4000, 1/10000 second
Auto Gain	Up to 66 dB = ALC + Sample 38dB + DSP 28dB
Manual Gain	6/12/18/24/30/36/42/44.8 dB
A. White balance	Auto White Balance: 1800°K~12000°K
M. White balance	ATW / AWB / Push-Lock / Manual R-B level
D&N mode	ICR : dual filter for day time and night time
D&N SW	auto/ manual/ external/ CDS sensor/ IR LED sync.
D&N spectrum	dual filter : 240nm ~ 1200nm
Converter	analog: 12 bit (A/D), digital: BT.656-960H
OSD menu	OSD menu: Lens mode, shutter, white balance, gain, ID, Day & Night, WDR, Back-Light, Brightness, Gamma NDR 2D-3D, Motion, Privacy ... etc.
Specification	privacy- 4 zone(size and position), sense up-x2~x32, mirror-hor. Or ver., backlight , hi-level limited ..etc.
Linking	DC IRIS Lens, CDS and IR LED linking
Holder Mount	Lens: C/CS mount, Body: 1/4" 20unc up and down
Temperature	operating: -15°C ~ +60°C, storage: -30°C ~ +70°C
Ambient Humidity	0 to 95% relative, non-condensing
Casing structure	die-casting aluminum alloy, Ivory color
Power consumption	DC12V 1.5W 110mA
Dimension	73(W) × 61(H) × 81(L) mm , 280g
safety	CE



Feature

- * High resolution SONY Effio Exview 960H CCD
- * OSD menu: Lens mode, shutter, white balance, AGC, Day&Night, WDR, Back-Light, Brightness, Gamma, 2D-3D, motion, privacy...etc.
- * Coded read out BW-700TVL and Color-650TVL
- * Day and Night ICR, true color, fine focus image
- * special function : Privacy, Sense-up, Mirror, Dual WDR, synchronize for CDS and LED illum.
- * 2D / 3D NDR noise reduce and GAIN correction

model and description

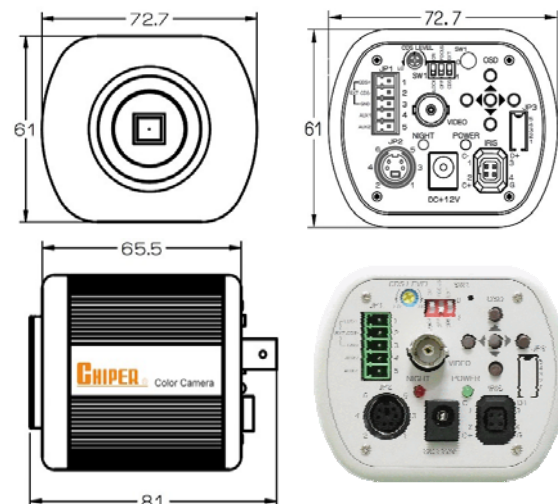
model : CPT-CD40 xx

xx : omit, Color only, IR rejection

xx = DN dual spectrum for D&N environment

xx = MF for ICR D&N mechanical filter

diagram and dimension



model : CPT-CD40

Specification is subject to change without prior notification.